

# *ICES North: An opportunity for research in the north*

LEG Lead & Administrators Meeting

November 5, 2022

David Savage, MD, PhD, CCFP(EM)

Interim Site Director, ICES North

[dsavage@nosm.ca](mailto:dsavage@nosm.ca)



# Disclosure

- **Faculty: David Savage**
- **Relationships with commercial interests:**
  - **Grants/Research Support:** Mitacs, CIHR, NOAMA, TBRHRI, Lakehead University
  - **Speakers Bureau/Honoraria:** None
  - **Consulting Fees:** None
  - **Other:** Interim Site Director, ICES North, Medical Director, NorthStream Rapid Labs

# Learning Objectives

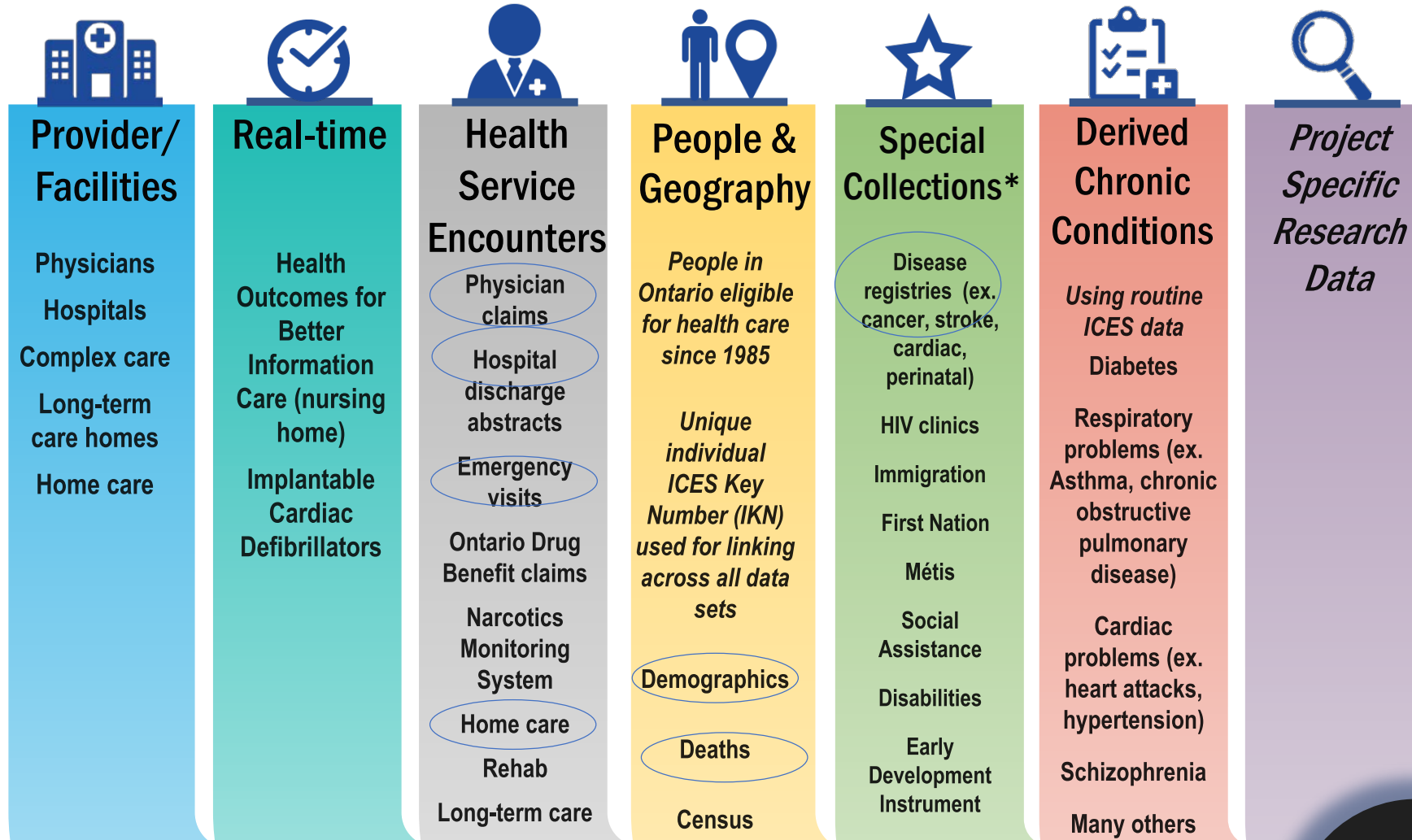
1. Describe the purpose and objectives of ICES North to NOSM U Faculty and LEG members.
2. Utilize ICES North to develop/conduct research activities

# What is ICES?

- A group of scientists and professionals working in core areas important to our healthcare system
  - Cancer
  - Cardiovascular
  - Chronic Disease and Pharmacotherapy
  - Life Stage
  - Kidney, Dialysis, and Transplantation
  - Mental Health and Addictions
  - Populations and Public Health
  - Primary Care & Health Systems
- ICES Scientists lead cutting edge research related to healthcare delivery and population outcomes

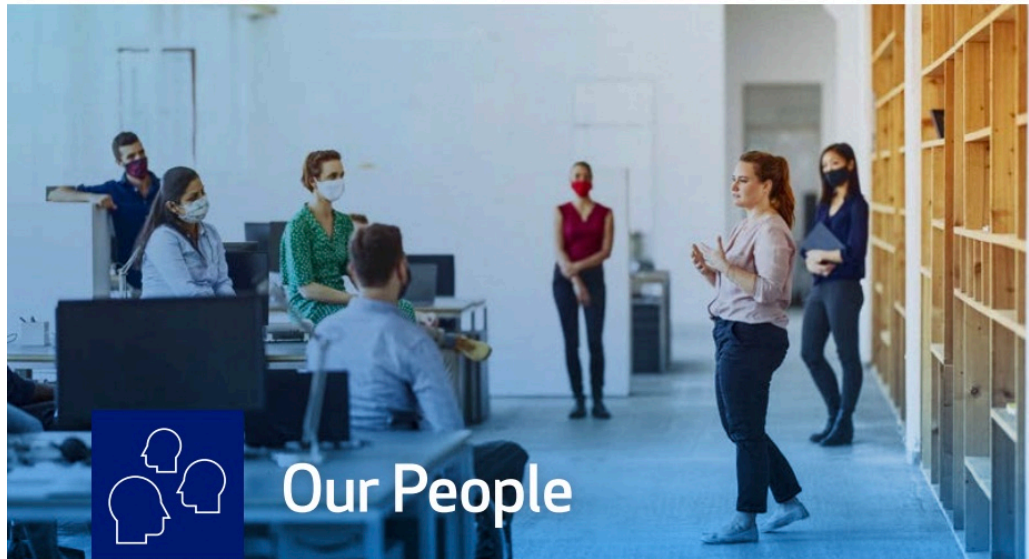


# ICES CORE Data Repository: Coded and Linkable



\* Special governance

Linked data set



## Our People

**572** scientists and staff  
(5% INCREASE FROM 2019/20)

**277** scientists  
(5% INCREASE FROM 2019/20)  
**295** staff  
(5% INCREASE FROM 2019/20)

**43%**  
of scientists work from sites other than ICES Central

**38%**  
of research staff work from sites other than ICES Central

**697**  
graduate, medical and post-graduate trainees mentored by ICES scientists

**274**  
graduate students accessing ICES data



## Research Capacity

**7** sites across Ontario

**8** research programs

**108** data holdings

**298**  
new data sharing agreements and amendments

**11**  
primary data collection studies involving 15 hospitals

**37%**  
overall grant success rate on 252 grant submissions

**44%**  
of grant submissions were on COVID-19-related topics



# What kinds of studies can you do?

## Descriptive

### Temporal trends in the utilization of echocardiography in Ontario, 2001 to 2009

Saul Blecker<sup>1</sup>, R Sacha Bhatia, John J You, Douglas S Lee, David A Alter, Julie T Wang, Hannah J Wong, Jack V Tu

## Costing

### Comparative Effectiveness of Generic Atorvastatin and Lipitor<sup>®</sup> in Patients Hospitalized with an Acute Coronary Syndrome

[Cynthia A. Jackevicius](#), BScPhm, PharmD, MSc,<sup>1, 2, 3, 4, 6</sup> [Jack V. Tu](#), MD, PhD,<sup>2, 4, 5</sup> [Harlan M. Krumholz](#), MD, SM,<sup>7, 8, 9, 10</sup> [Peter C. Austin](#), PhD,<sup>2, 4</sup> [Joseph S. Ross](#), MD, MHS,<sup>8, 11</sup> [Therese A. Stukel](#), PhD,<sup>2, 4</sup> [Maria Koh](#), MSc,<sup>2</sup> [Alice Chong](#), MSc,<sup>2</sup> and [Dennis T. Ko](#), MD, MSc<sup>2, 4, 5</sup>

## Policy

### Cardiovascular Outcomes after a Change in Prescription Policy for Clopidogrel

Cynthia A. Jackevicius, Pharm.D., M.Sc., Jack V. Tu, M.D., Ph.D., Virginie Demers, M.D., Magda Melo, B.Sc.Pharm., M.Sc., Jafna Cox, M.D., Stephane Rinfret, M.D., M.Sc., Dimitri Kalavrouziotis, M.D., M.Sc., Helen Johansen, Ph.D., Hassan Behloul, Ph.D., Alice Newman, M.Sc., and Louise Pilote, M.D., M.P.H., Ph.D.

## Associations

### Comparing the ambulatory care and outcomes for rural and urban patients with chronic ischemic heart disease: a population-based cohort study

Christopher Tran<sup>1</sup>, Harindra C Wijeyesundera<sup>1</sup>, Feng Qui<sup>1</sup>, Jack V Tu<sup>1</sup>, R Sacha Bhatia<sup>2</sup>

## Validation

### The CANHEART health index: a tool for monitoring the cardiovascular health of the Canadian population

Laura C. MacLagan, Jungwee Park, Claudia Sanmartin, Karan R. Mathur, Doug Roth, Douglas G. Manuel, Andrea Gershon, Gillian L. Booth, Sacha Bhatia, Clare L. Atzema and Jack V. Tu  
CMAJ February 18, 2014 186 (3) 180-187; DOI: <https://doi.org/10.1503/cmaj.131358>

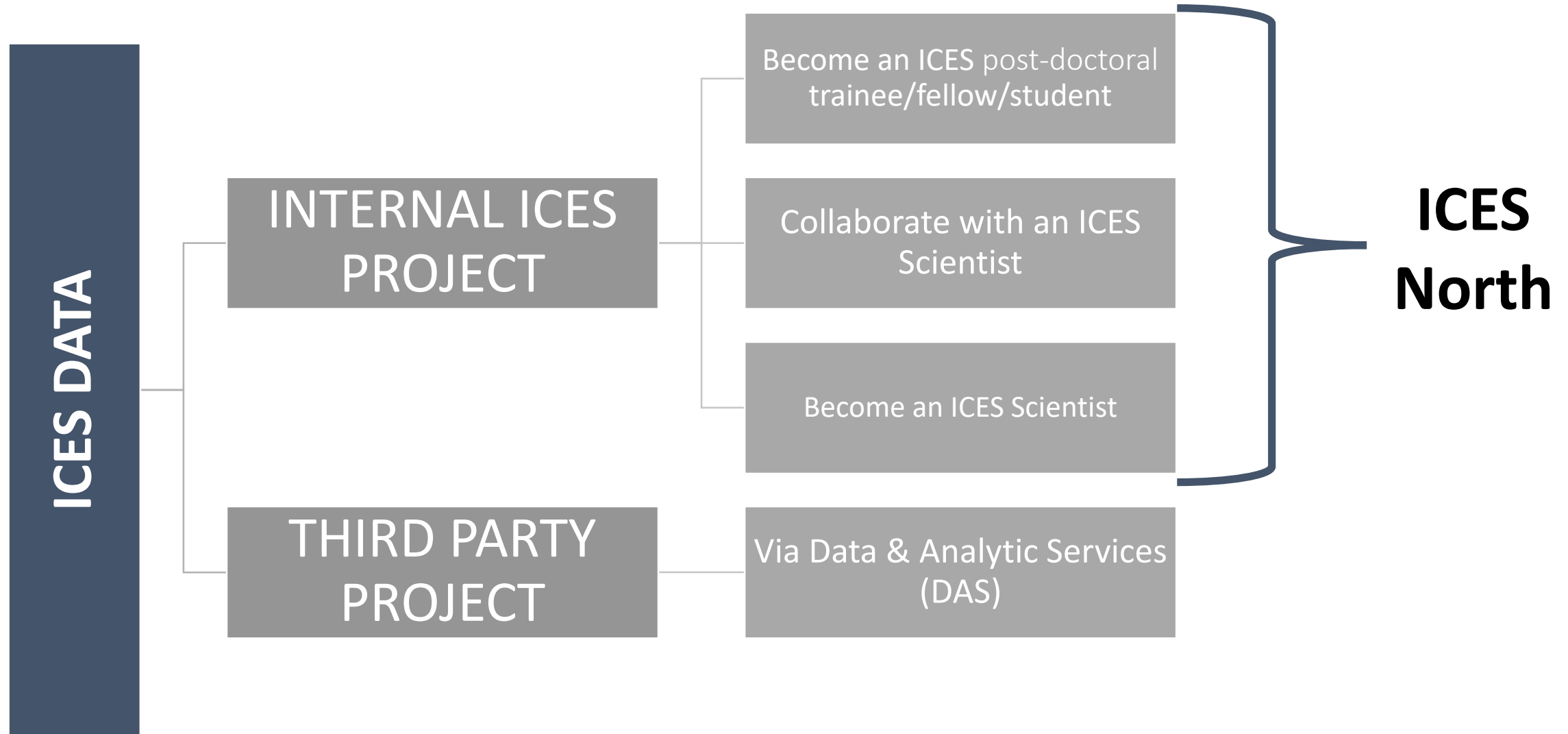
## Efficacy

### Predictors and clinical outcomes of inpatient versus ambulatory management after an emergency department visit for atrial fibrillation: A population-based study

Christopher Tran<sup>1</sup>, Maria C Bennell<sup>2</sup>, Feng Qiu<sup>3</sup>, Dennis T Ko<sup>4</sup>, Sheldon M Singh<sup>2</sup>, Paul Dorian<sup>5</sup>, Clare L Atzema<sup>6</sup>, R Sacha Bhatia<sup>7</sup>, Harindra C Wijeyesundera<sup>8</sup>



# How can I use ICES Data for my research?



# How much does it cost?

## INTERNAL ICES PROJECT

**A) Project Cost:** \$33,000 average (\$15,000– \$150,000)

**B) Analysis:** Pay ICES analytic staff

- Standard hourly Epidemiologist/Analyst rate: ~\$114-\$125/hour
  - Highly trained staff working 1-on-1 with scientists
  - Support with: planning, dataset creation, statistical methods/interpretation, and deliverable preparation

## THIRD PARTY PROJECT

**A) Project Cost:** \$5,000 – \$20,000

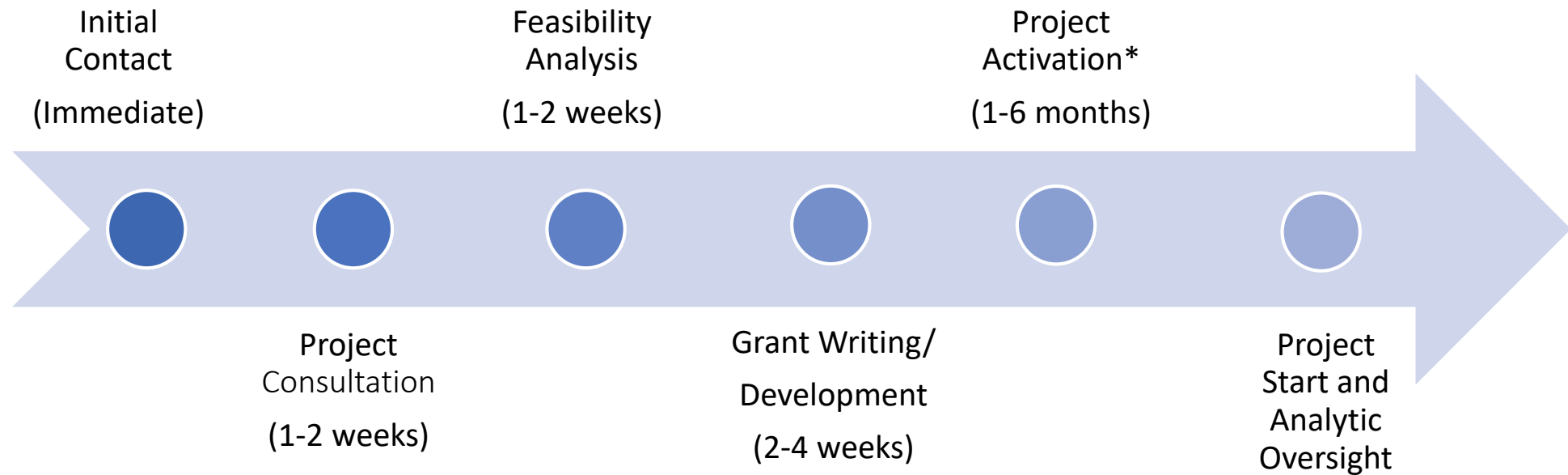
**B) Analysis:** Do it yourself via IDAVE (VPN)

- Researcher covers cost of data cut and remote access usage fees
- Analysis done by investigator team (can include graduate students)

# Why is ICES North a great opportunity?

- Develop research ***experience*** in a ***team environment***
- Access to provincial level datasets
- Access to ***scientists, analysts, methodologists, and epidemiologists***
- ***Linked population level research*** that can influence ***healthcare policy, decision making*** and ***clinical practice***
  - Provincial level data is comparable to a multicentre trial
- Develop the healthcare context for our northern, rural, and remote population

# How to start the process?



# What are your next steps?

## If you are interested in working with us:

- Develop a research question
- Explore
  - Review prior publications in your field:
    - <https://www.ices.on.ca/Publications/Journal-Articles>
  - Understand our data dictionary:
    - <https://datadictionary.ices.on.ca/Applications/DataDictionary/Default.aspx>
- General inquires
  - Contact us directly
- We can provide letters of support for grant applications and help with methodology

# Frequently Asked Questions (FAQs)

- 1) Who can access individual-level ICES data?
- 2) Do I need to tell you about my grant application?
- 3) How will my funding be used?
- 4) How do I become an ICES scientist?
- 5) How does the third-party (DAS) route differ?

# Thanks

- [dsavage@nosm.ca](mailto:dsavage@nosm.ca)